

ROSSENDALE NEWSLETTER FOR BUSINESSES- OCTOBER 2022



Rossendale
BOROUGH COUNCIL

INVEST IN
Rossendale

CONTENTS

Page 3	Introduction
Page 4	New Staff within the Economic Development Team
Page 5	Looking for Staff? Rossendale Works
Page 6	Levelling Up Fund
Page 7	Become a Business Advisor
Page 8	Offices to let at The Business Centre
Page 9-11	Climate Change Business Breakfast
Page 12	RBC Carbon Reduction Fund
Page 13	Chamber Low Carbon - East Lancashire Chamber of Commerce
Page 14	Haslingden Business Association
Page 15	Commercial waste collection
Page 16	Support and book The Whitaker
Page 17	Heritage regeneration in Haslingden
Page 18	Bacup Heritage Walking Tour
Page 19	Feedback and Support



INTRODUCTION

Welcome to our Business Newsletter for October 2022

A warm welcome to the October newsletter from your new Economic Development Officer! A major part of my role is to support Rossendale-based businesses where ever possible. Details about this support, including general information, funding details and business news from your area are outlined in this newsletter.

As the world returns 'back to normal' it is hoped that all of the struggles businesses faced over the pandemic are now fading into the background. However, we know that isn't the case for all businesses and sectors, and some are still facing difficulties when trying to bounce back to pre-pandemic normality.

Your Council is here to support you. Contact us to find out what we can do for you!

Leah Armitage

ECONOMIC DEVELOPMENT OFFICER
ROSSENDALE BOROUGH COUNCIL

LeahArmitage@rossendalebc.gov.uk
01706 252483



NEWSLETTER

NEW STAFF WITHIN THE ECONOMIC DEVELOPMENT TEAM

We have recently welcomed through new members of staff to the Economic Development Team within the Council

LEAH ARMITAGE - ECONOMIC DEVELOPMENT OFFICER



I am a recent Masters graduate and joined the team in June as Economic Development Officer. My role is exciting and varied - no two days are the same. It covers everything from being the manager of Bacup and Haslingden Markets; to looking at tourism; to finding out ways we can develop Rossendale. With lots more in between!

I also look at ways the Council can support businesses in the community. This can be financial help, finding suitable premises or providing help and advice. If you would like to have a chat about how we can help your business, please get in touch!

LAABIYAH IQBAL - HERITAGE REGENERATION OFFICER

I studied Classics and Archaeology at the University of Kent. Following on from this I undertook a short research project at Historic England based on industrial mills in Oldham, Greater Manchester. I then joined the team at Heritage Lincolnshire, a charity where I was involved in numerous heritage projects, including regeneration schemes, planning consultancy and engagement activities.

In my current role as Heritage Regeneration Officer, I work on the Big Lamp project, Haslingden and the Bacup High Street, Heritage Action Zone. Both projects are shopfront regeneration schemes funded by the National Lottery Heritage Fund and Historic England.



DJANGO BACK - EMPLOYABILITY OFFICER



I have lived in Rossendale for over 20 years, my background is sport and sports coaching, which I have worked in for the past 3-4 years and been involved in for most of my life.

My job within the Council is as the Rossendale Works Project Officer. This role involves helping people to become involved in sports and physical activity within the community and assist people in looking for work alongside helping other individuals move closer to the job market.

LOOKING FOR STAFF?



#RossendaleYouthWorks #RossendaleWorks

Looking for staff?

Businesses from across all sectors have told us that they are currently struggling to employ new staff.

Last year, Rossendale Works secured employment for over 100 residents within Rossendale. This is a quality employability project that is delivered here in the borough.

About the project

People who are proactive in seeking a job will be referred to our Rossendale Works project.

The candidate will be assessed and matched to an appropriate **4 week work placement** opportunity.

As a minimum, the candidate must leave the completed work placement with a **reference** or alternatively offered a **paid position within the business**.



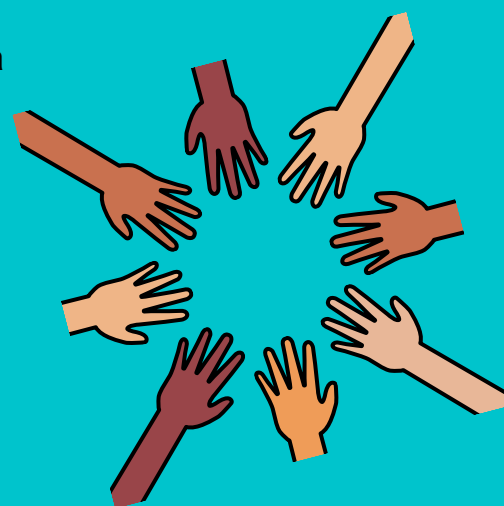
How to be involved

All businesses are welcome to offer work placements providing there is the likelihood of a job offer at the end of it which pays, at a minimum, the living wage

If you have a placement opportunity then please call us on **01706 252483**.

You can also email any job profiles to economicdevelopment@rossendalebc.gov.uk

We will meet with you to discuss your placement requirements. You will be sent matched profiles for your consideration; you will then be given the opportunity to interview candidates before offering any work placements.



Benefits to the business:

- There are **no costs** during the placement as the candidate receives benefits
 - Access to a pool of people based in the local area
- Trial candidates for free before offering positions • Help local people gain specific skills • **Free publicity** from your local council
- Add value to the company • Tailored support throughout the process



LEVELLING UP FUND

As the country transitions to a new Prime Minister, many of us in the North are left wondering about the Government's levelling up agenda. It seems that the Government is keen to continue to boost opportunities to grow the local economy across the North and we are looking to take advantage of this for local businesses. The Rossendale Levelling Up Board has been meeting since 2021 and is made up of local businesses, the council, Nelson & Colne College and is supported by a wider network of local groups. The Board have developed a £17.9m bid to the Government's Levelling Up Fund.

Our bid is the catalyst to accelerate growth in the local economy. It's an exciting plan aimed at helping local businesses. We're looking to reconfigure Rawtenstall market, completely redevelop the area where Bacup Market is currently sited, improve the surrounding areas of public realm, streamline Rawtenstall gyratory to improve traffic flow and create 'The Bridge' – a brand new centre for learning in the heart of Rawtenstall in partnership with Nelson & Colne College.

We see all these proposals as a springboard to really help new entrepreneurs or those looking to grow and expand their business. This should also give a new, more vibrant, look and feel to our town centres particularly Bacup, which we want to see transformed over the coming years. The bid was submitted in early August and we hope to hear the outcome from Government in the Autumn.

Neil Shaw - Chief Executive, Rossendale Council



BECOME AN ENTERPRISE ADVISOR

Support Lancashire's Careers Hub and become an Enterprise Advisor

Enterprise Advisers are volunteers from businesses who work directly with an individual School or College to support their Careers Leader and Senior Leadership Team to **drive improvements** in careers provision and help **increase connections** to local employers to ensure a strong connection to the **world of work**.

Enterprise Advisers are individuals who represent our wide and diverse economy and range from Chief Executives, Senior Leaders, Managers, Business Owners and Consultants from both the private and public sector who collectively share a passion to **help every young person find their best next step**. By volunteering some of your time, you can help support pathways into your industry by using existing contacts to support career activities and contribute to shaping young people's futures.

Enterprise Advisers act as a critical friend and provides an external voice giving strategic input, evaluation of their careers programme and advice on how to measure impact and outcomes.

If you would like to give back to your community and help build Lancashire's future workforce then pledge to "Become an Enterprise Advisor" or "Give an Hour" to support a local school now - <https://www.lancshireskillshub.co.uk/lancashire-skills-pledge/>

For more information, please follow the link below or contact **Michelle.fox@inspria.org.uk** <https://lancashirecareershub.co.uk/could-you-be-our-next-enterprise-adviser/>



-  Give an hour
-  Be an Enterprise Advisor
-  Work Experience and Industry Placements
-  Take on an Apprentice
-  Become an Apprenticeship Ambassador
-  Employ people who are out of work
-  Upskilling your workforce

Search 'Lancashire Skills Pledge'

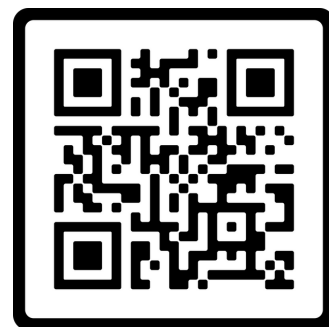


OFFICES TO LET FUTURES PARK BUSINESS CENTRE

We have a limited selection of office space that is newly available at Futures Park – Business Centre in Bacup. The open plan offices provide the ideal solution and layout for those needing space to accommodate teams of 2 – 4 people. With on-site parking included, rents are also inclusive of building utilities and high-speed broadband on flexible terms with competitive rates.

For more information, feel free to scan our brochure and get in contact with our property team for a full availability list and support with any possible enquiries.

property@rossendalebc.gov.uk



OFFICE TO LET

Futures Park, Bacup, OL13 0BB



Available Immediately

Rent: £500 pcm



- ▶ Bright, open plan office
- ▶ Size: 323 sqft
- ▶ Suitable for 2-4 people

- ▶ High-speed internet
- ▶ Free on-site car parking
- ▶ Dedicated fob entrance

Tel: 01706 252521

Email: property@rossendalebc.gov.uk

Description

A bright, open plan office at Futures Park Business Centre. Situated on the first floor and benefiting from:

- High speed Internet
- Cat2 lighting, suspended ceiling
- Access to Communal kitchen
- Access to meeting room facilities
- Dedicated fob entrance
- Internal lift
- Free on-site car parking
- CCTV monitored

Location

A681. Adjacent to Stubblee Park and Lee Quarry. Direct bus routes to Rawtenstall and Rochdale.

Details

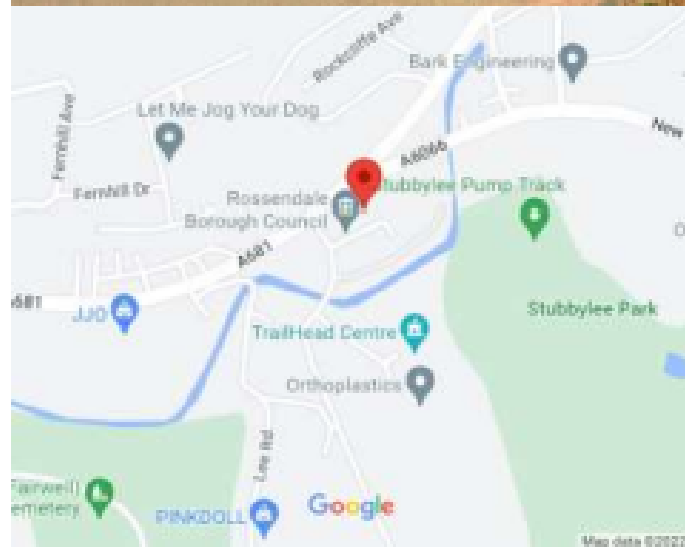
Lease Terms: Minimum 12 Month term

Business Rates:TBC

Viewings: Please contact the Property Team to arrange a convenient date and time.

Tel: 01706 252521

Email property@rossendalebc.gov.uk



MISREPRESENTATION ACT 1967

1. These details do not form part of an offer or contract.
2. They intend to give a fair description but the Vendor/Lessor accepts responsibility for any error they may contain.
3. Purchasers or prospective tenants should satisfy themselves by inspection of the premises.
4. No person in the employ of Rossendale Borough Council has authority to give any representation or warranty in relation to this property.
5. *Prices/Rents are exclusive of VAT.
6. Subject to contract.

PROPERTY MISDESCRIPTION ACT 1991

These details are believed to be correct at the time of compilation, but may be subject to subsequent amendment.

ROSSENDALE'S CLIMATE CHANGE BREAKFAST

Rossendale Council in partnership with the East Lancashire Chamber of Commerce, have held a climate change business breakfast event – Destination Net-Zero.

27 businesses from across all industries and sectors attended the event to find out more about how they can reduce their carbon footprint and ways to reduce their soaring energy bills.

According to the national target - to keep global warming to no more than 1.5°C, emissions need to be reduced by 45% by 2030 and reach net zero by 2050. This means that all businesses need to play their part to reduce emissions to slow the rate of climate change.

Leah Armitage, Rossendale Council's Economic Development officer talked to businesses and community organisations about the Carbon Reduction Fund that is available to them to help with renewable energy technologies, battery storage, lighting and controls, GAS LPG or oil boilers, heat-pumps and air conditioning, infrared and electric heating, heating and cooling controls.

Dr Steve Wright – Director of Academic Standards at Nelson and Colne College Group and Sobia Khurram - Energy and Environment Advisor within East Lancashire Chamber of Commerce's Sustainability Team were also there to talk about their projects, programmes and offers.

Councillor Alyson Barnes, Leader of the Council said: "It was great to see so many businesses attending this event and interested and actively looking at ways to reduce their carbon footprint.



CARBON REDUCTION FUND

Are you looking to reduce your rising energy bills and become a greener workplace? Rossendale Borough Council's Carbon Reduction Fund could help!

Rossendale Borough Council's Carbon Reduction Fund provides funding towards projects where the primary aim is to reduce CO2 emissions from Small and Medium Enterprises (SMEs) and Community Buildings.

The fund is designed to support practical interventions which have a quantifiable reduction in the carbon footprint of the SME or Community Building:

- Energy conservation and renewable energy
- Reduction in energy use, businesses and community buildings
- Reducing CO2 emissions

The primary criterion for carbon reduction applications to the fund is CO2 savings per pound spent.

The fund will encourage smaller local businesses including retail shops and services to adopt carbon efficient technologies.

Here are some examples of potential projects:

Some examples of eligible products for RBC carbon reduction grants:

- Renewable energy technologies
- Battery storage
- Lighting and controls
- GAS LPG or oil boilers
- Heat-pumps and air conditioning
- Infrared and electric heating
- Heating and cooling controls

SMEs can apply for between £1000 minimum up to a maximum £5000 per project.

The grant must not exceed 50% of the total project costs.

For Community organisations and charities, the Grant available for 100% project costs up to £5000.

The fund is supported by the East Lancashire Chamber of Commerce (ELCC) who will provide a **free carbon audit/technical report** to establish baseline data and advise on appropriate carbon reduction measures.

The first step is to email climatechange@rosendalebc.gov.uk to register with the programme and request the ELCC registration form for the carbon audit.

CHAMBER LOW CARBON

East Lancashire Chamber of Commerce and Industry, in partnership with North & Western Lancashire Chamber of Commerce, Businesswise Solutions Ltd and BOOST, are **supporting Lancashire businesses in saving money and reducing their carbon footprint.**



This £6m European part-funded programme is committed to the provision of a **free suite of services** aimed to help businesses **improve energy and environmental efficiencies**, introduce on-site **renewable energy** generation and **save money.**

Grants of 50% up to £15k or 30% up to £25k are available to assist eligible Lancashire-based businesses with this.



ARE YOU A LANCASHIRE BASED BUSINESS? LOOKING TO REDUCE YOUR CARBON FOOTPRINT, SAVE MONEY & DRIVE ENERGY EFFICIENCIES? WE CAN HELP YOU ACCESS



1-TO-1 BUSINESS SUPPORT IN

- Reducing bills and raw material waste
- Energy efficiency
- Process resource efficiency
- Water efficiency
- Waste / resource management
- On-site energy auditing
- On-site carbon footprint analysis and action plan



BEST PRACTICE EVENTS

- Let us help you understand which low carbon renewable energy to choose and why
- Find out about low carbon technology, how you can use it and which is best for your business
- We can help you calculate the pay back period
- Understand how it can be installed on your premises



ADVANCED BUSINESS SUPPORT

- Behaviour change/On-site training
- Masterclass of management systems ISO 14001 and ISO 50001
- Masterclass into on-site energy auditing
- Introduction to environmental auditing



HASLINGDEN BUSINESS ASSOCIATION

Haslingden Business Association held their very first 'Nibbles and Networking' Event at Haslingden Market. Joined by CHAI a small group run by volunteers who promote community cohesion, with a focus on holding activities that benefit women and BAME members from our local community. Rossendale Civic Trust exhibited artefacts that were made in Haslingden as well as showcasing Haslingden's Industrious past, through historic photographs.

The event was well attended, attendees enjoyed a buffet by Haslingden Market's very own Suru, who specialise in Far Eastern/Japanese Fusion Street Food.

Check out our website www.haslingden2040.co.uk , Facebook (@Haslingden2040Vision) and Twitter (@Haslingden2040) pages for up to date info.



ARE YOUR WASTE REMOVAL COSTS RISING?

Looking for a reliable waste removal contractor that can offer you great value?

Take advantage of our competitive waste and recycling collection service designed to meet your individual needs.

Switch now and save your business money! Help the environment ... Help your business!

About our containers

We offer a choice of wheeled containers to suit your storage area. You can choose from **140, 240, 660, 770, 1100 litre bins** or **prepaid sacks**.



What a waste

Sending waste to landfill cannot carry on forever. Space is running out and the cost is rapidly increasing.



What we can offer you

We can provide you with a reliable and flexible waste and recycling collection service tailored to your individual needs. As well as being competitively priced we have extensive local knowledge which helps us to respond quickly and efficiently to your requirements.

We offer:

- regular collections;
- competitive rates;
- fixed price contracts;
- flexible payments;
- no hidden charges;
- a variety of modern and hygienic containers;
- lockable metal bins;
- free, no obligation advice on your legal responsibilities and how to reduce costs;
- free waste transfer notes;
- experienced and fully trained staff.



Your responsibilities

As a business you are responsible, by law, for arranging the collection and disposal of the waste you produce.



Don't let your waste go to waste

If you would like to take the first step to reducing and recycling your waste as well as making your business more sustainable, please contact our Waste Management Service to discuss your individual requirements and request a quote.



Why recycle?

- To send less waste to be buried in the ground at landfill sites where space is rapidly running out.
- To save valuable resources by helping to turn your waste into new products.
- To help the environment.
- To save your business money.

The more you recycle the more you could save in disposal costs.



Let us help you manage your waste

To assist you with managing your waste and recycling more we can carry out a free waste audit on your behalf. This will help you decide which containers you need, what size they should be and where it will be best to store them.

SUPPORT AND BOOK THE WHITAKER

Help support the Whitaker by becoming a Friend of the Museum! email: form1@mail.com for further details or visit the Friend's page on the Whitaker website.

The Friends support the Whitaker with a variety of activities including fund raising for conservation work, education, new equipment and refurbishment.

We also promote a lively programme of monthly talks, walks and visits with a variety of topics of both local and general interest.



The Whitaker has spaces available to hire during the day for breakfast meetings, presentations, product launches, private dining and corporate away days!

Flooded with natural daylight and views across the Rossendale Valley, the space is well suited to working closely with colleagues or clients, offering an inspiring space to help fuel new ideas and creative thinking.

Due to its recent redevelopment the museum now offers traditional and modern spaces including an outdoor courtyard and we are always more than happy to organise guided tours of one of our celebrated galleries.

HERITAGE REGENERATION IN HASLINGDEN

Project update – the first building grants will be approved by the project Board in October. The public realm contractor tender is live [here](#)

Lots of exciting community engagement events and activities have been happening and more are planned in the coming weeks. Former events include a 3 day event on traditional building skills including lime mortar, lime plastering and decorative plastering. We also ran traditional sign writing workshops, where attendees made gold leaf signs. The children at St James' Primary School, Haslingden were visited by Victorian mill owners Mr & Mrs Pemberton, who were looking to recruit child mill workers!

Stay tuned for our upcoming Autumn events!



BACUP HEIRTAGE WALKING TOUR

VALLEY
HERITAGE

Bacup's Past - From Bleak to Blingy

HERITAGE WALKING TOUR

FREE EVENT

Join local historian Kathy Fishwick on a walk through time. Discover the bleak conditions that the people of Bacup had to endure including poor housing and sanitation. Later the town started to improve its building stock. Many of the 'blingy' & ornate buildings survive today; including a local treasure that's been restored to its former glory, The Alliance (Former Lancashire & Yorkshire Bank).



Saturday 15th October



The Alliance Building
(former Lancashire & Yorkshire Bank)



14:00 - 15:00



HOW TO BOOK ON AND OTHER INFO

To find out more & book on contact
Laabiyah Iqbal
Laabiyahiqbal@rossendalebc.gov.uk
07923 222707
01706 252480

Please wear appropriate footwear and clothing. Don't forget to bring a brolly!



Rossendale
BOROUGH COUNCIL



Made possible with

Heritage Fund

AHF Transforming
Heritage
www.ahfund.org.uk

FEEDBACK & SUPPORT

We are always looking to improve and we can only do that with feedback from you!

If you would like to tell us how we have done or how we can improve, then please email

economicdevelopment@rossendalebc.gov.uk

Our dedicated Economic Development Team is here to support you in the following ways:

- Free business signposting
- A dedicated website for business in Rossendale
- Promotional videos
- Invest In Rossendale business workshops
- Business enquiry and property search function
- NNDR Relief Scheme

Here are the best ways to contact us:

Phone: **01706 252483**

Email: economicdevelopment@rossendalebc.gov.uk

Rossendale Borough Council

The Business Centre

Futures Park

Bacup OL13 0BB

THANK YOU!

NEWSLETTER